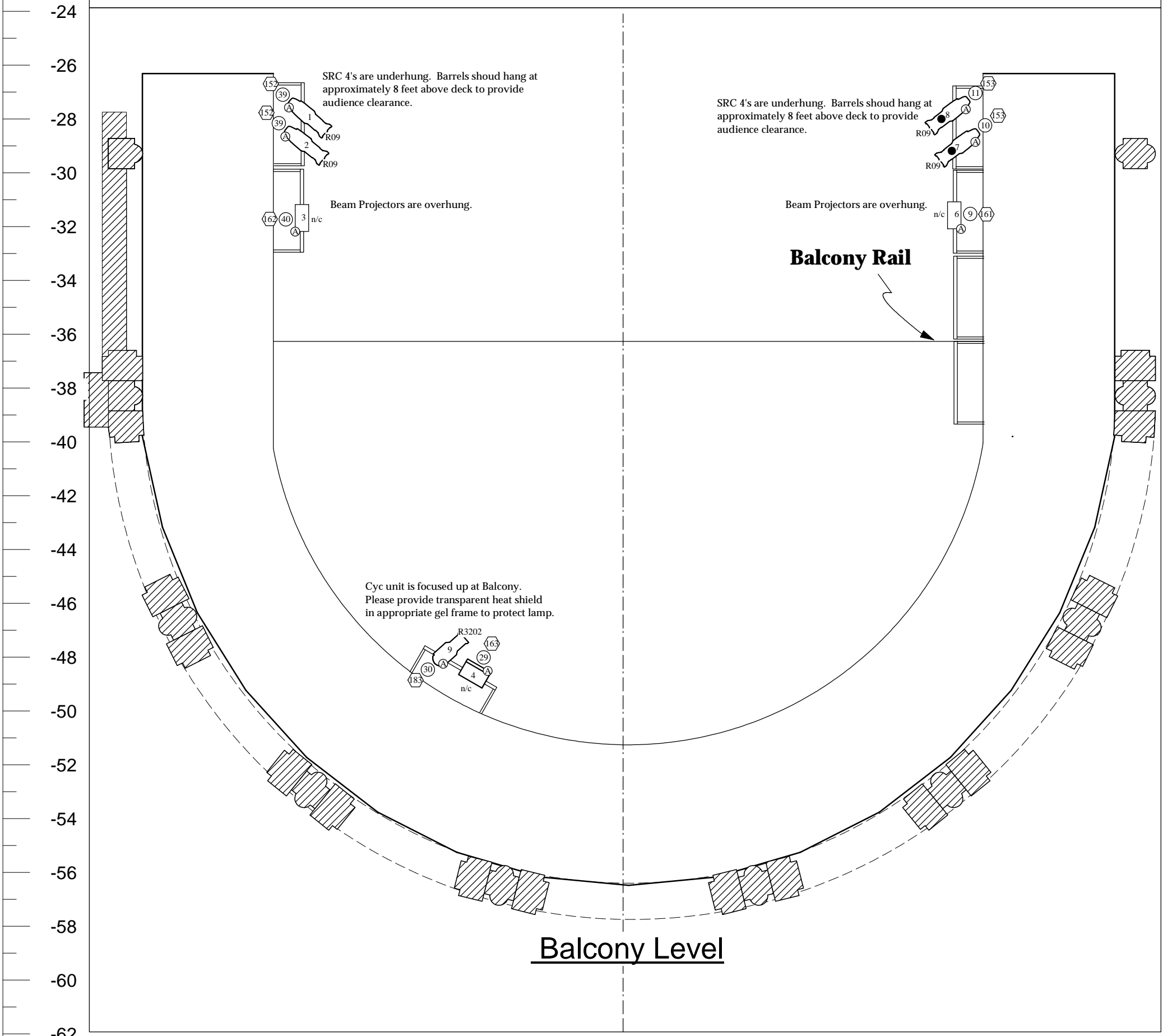


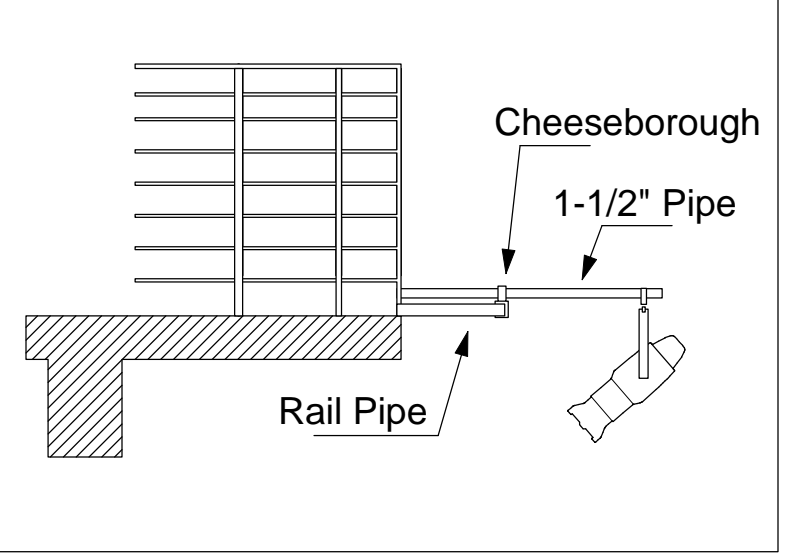
• CENTERLINE SECTION LOOKING WEST •



NOTES:

ALL PIPES DRAWN ARE THE BOTTOM OF THE PAIR. ALL UNITS HANG ON BOTTOM PIPE UNLESS NOTED.
 THE UNISTRUT INDICATED ON THE PLOTS REFERS TO THE UNISTRUT INSTALLED IN THE WALLS. PLEASE RIG LIGHTING ON THOSE POSITIONS WITH FLEXIBILITY
 THE BALCONY LEVEL IS AN ACTING AREA AND AUDIENCE CROSSOVER. PLEASE KEEP ALL CABLE RUNS NEAT

Under Balcony Rail Pipe Detail



KEY

- 4.5x6.5 Altman, 750W (0) EHG
- 6x9 Altman, 750W (18) EHG
- 6x12 Altman, 750W (16) EHG
- 30° Colortran, 750W (0) EHG
- 36° Source 4, 575W (0) HPL-675
- 50° Source 4, 575W (0) HPL-675
- 6" Fresnel Altman, 1kW (16) BTR
- PAR 64 MFL, 1kW (16) Q1000
- PAR 38, Blue Light 250W (1)
- Q-Lite Altman, Worklight 1kW (7) FCM
- Source 4 PAR MFL
- Color Fader
- L&E Single Cell Far Cyc

TYPICAL

- 44 — COLOR
- 23 — GOBO
- 25 — UNIT NO.
- 26 — ADDED TO REP
- 128 — DIMMER
- 44 — CHANNEL

The University of Cincinnati, College-Conservatory of Music
The Lights Directed by David Groom
 Scenic Design by Michael Minahan

Light Plot

LIGHTING DESIGNER: Andrew J. Hungerford
 ALD: Chris Burkholder
 M.E.: Lois Catanzaro
 DATE CREATED: April 6, 2004
 DATE UPDATED: April 25, 2004
 SCALE: 1/4" = 1'-0"

Revision #3
 4/25/2004
 FILE NAME: thelights_4_25.mcd

UNIVERSITY OF CINCINNATI
 COLLEGE CONSERVATORY OF MUSIC
 THEATRICAL DESIGN & PRODUCTION
 LIGHTING DESIGN DEPARTMENT
 (513) 556-9446

PLATE:
1
 OF ONE

DRAWN BY: KGO & KEH & CSB & AJH