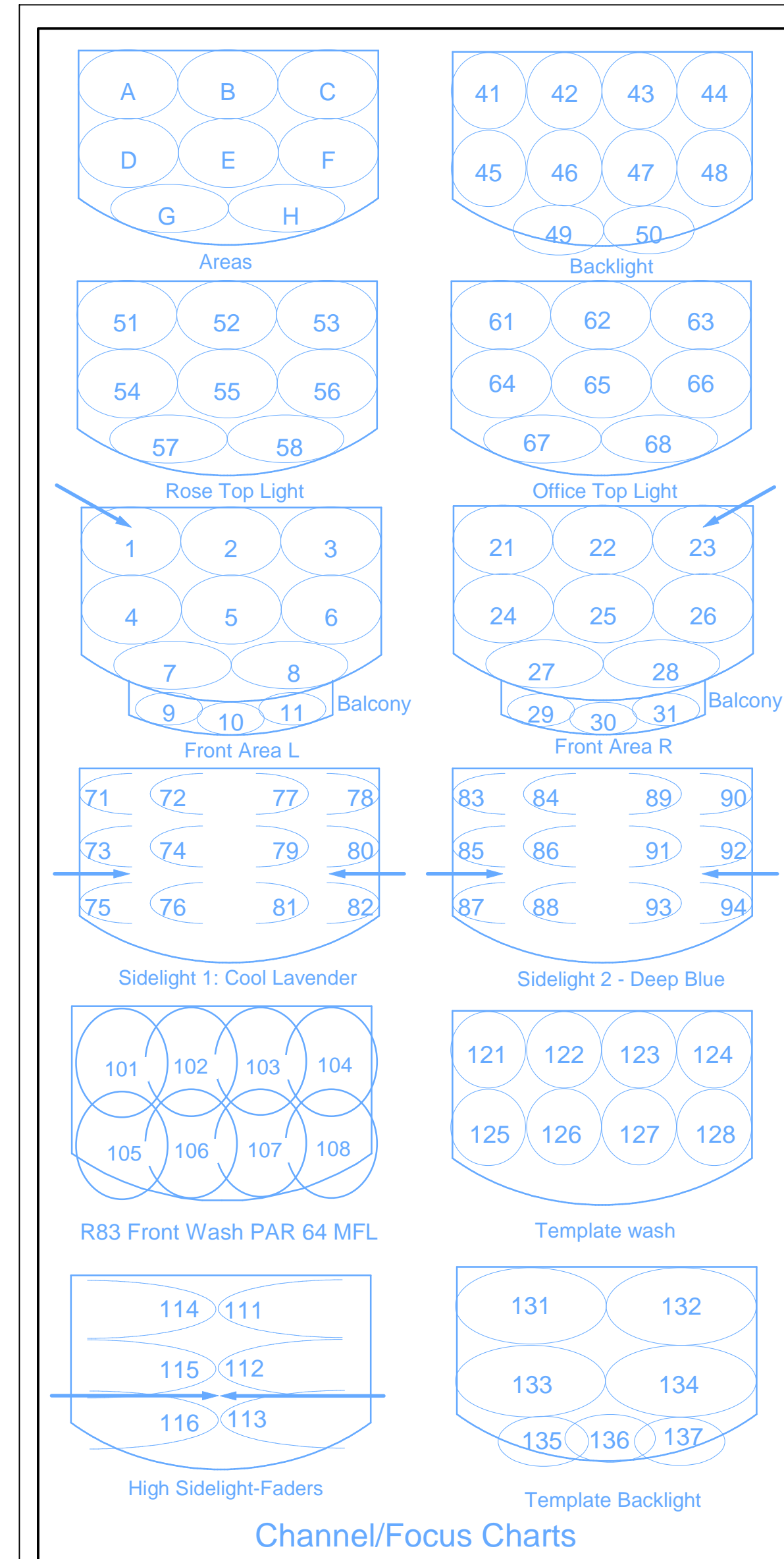
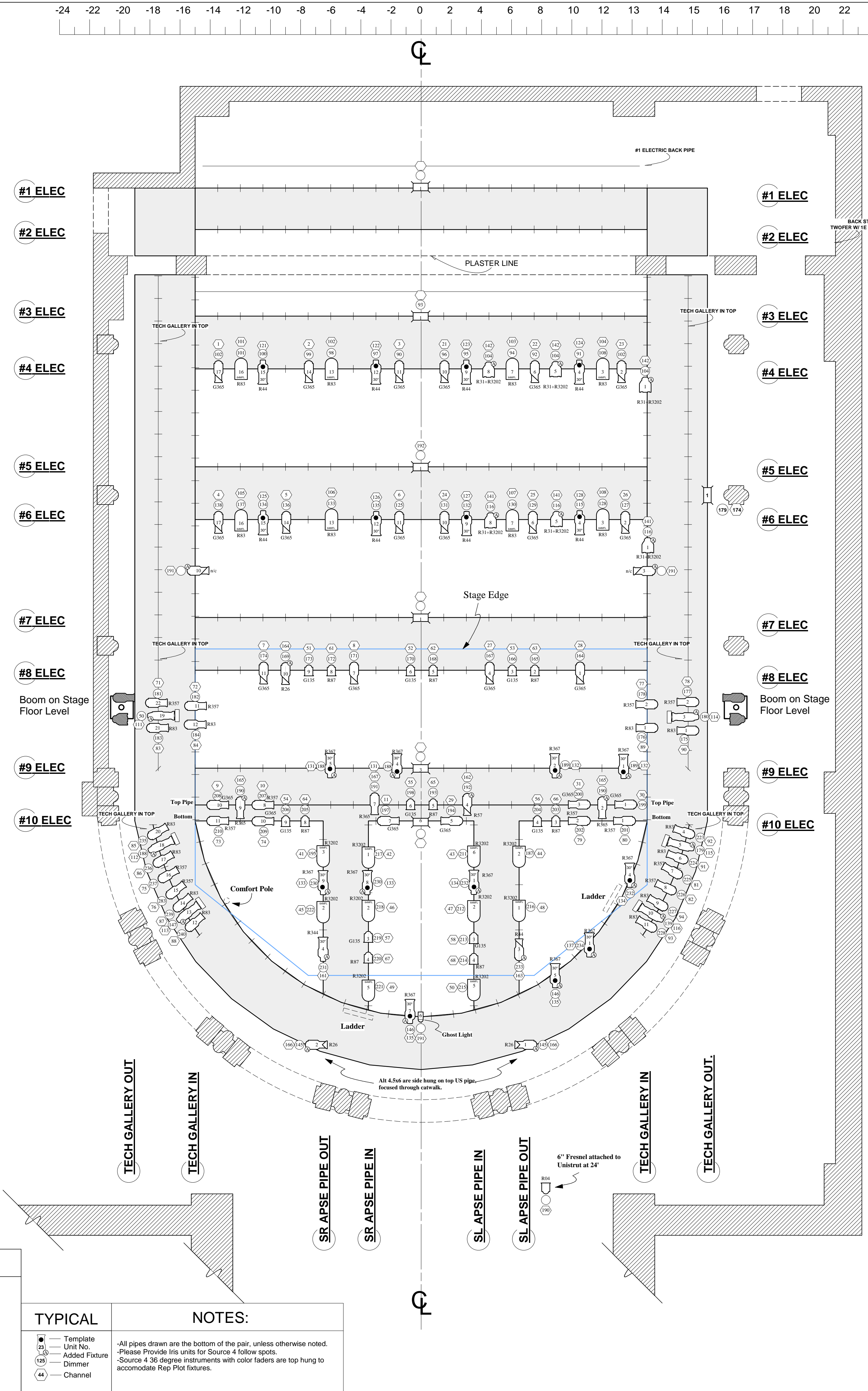
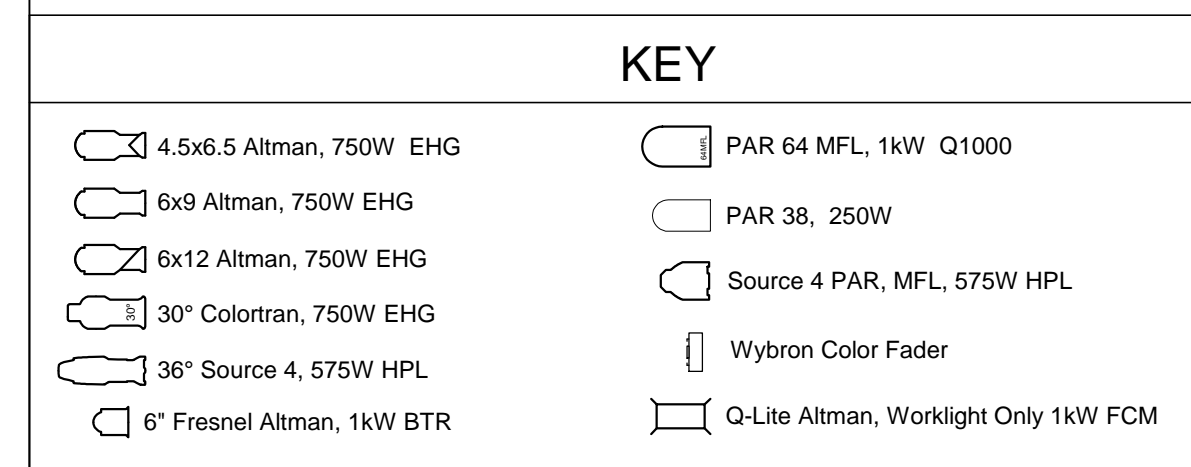


-24 -22 -20 -18 -16 -14 -12 -10 -8 -6 -4 -2 0 2 4 6 8 10 12 13 14 15 16 17 18 20 22 24



**Quick Reference to Specials**

Center Bump	191	HR Spot	171
Catwalk Lights	166	HL Spot	172
Comfort Pole	161	SL Shin	151
SR Ladder	163	SR Shin	152
UC Ladder	164	SL US	154
Sad Thad	162	SR US	153
Eldrich Center	167	SL Window	174
Curtain	190	SR Window	173
		Sunset DS	142
		Sunset US	141

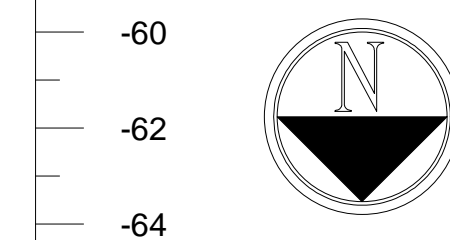
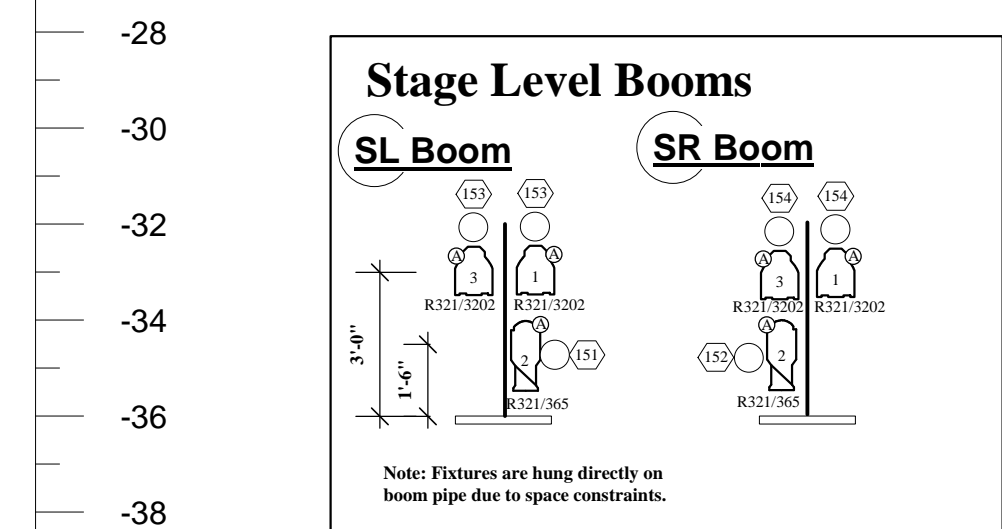
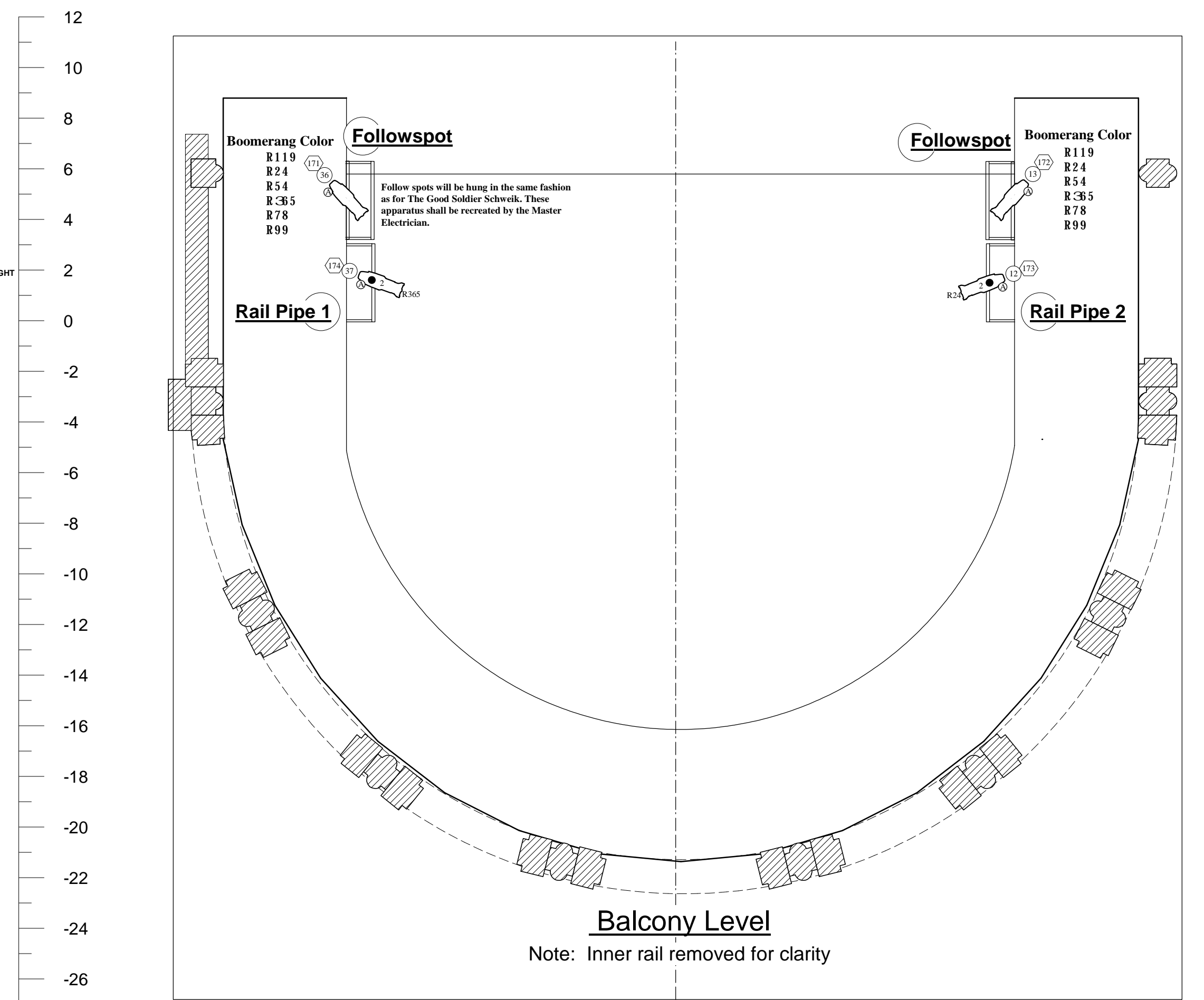


**TYPICAL**

- Template
- Unit No.
- Added Fixture
- Dimmer
- Channel

**NOTES:**

- All pipes drawn are the bottom of the pair, unless otherwise noted.
- Please Provide ltr units for Source 4 follow spots.
- Source 4 36 degree instruments with color faders are top hung to accommodate Rep Plot fixtures.



**HOUSE LIGHT DIMMERS**

Position	Dimmer
3000 Pillar Sconce	241
4000 Pillar Sconce	243
3000 Foyer Entrance	244
4000 R/L Proscenium Entrance	245
4000 Apse Aisle Light	246
Apse House Light	247
Center House Light	248
Proscenium House Light	249
4000 Aisle East	250
3000 Proscenium, Entrance R/L	251
HR Under Balcony, Off Stage	252
HR Under Balcony, On Stage	253
Apse Stairs	254
HL Apse Under Balcony, Off Stage	255
HL Under Balcony	256
Apse Under Balcony, On Stage	257
4000 HR Balcony, Off Stage	258
4000 HR Balcony, On Stage	259
HR Apse Under Balcony, Off Stage	260
2000 Apse Under Stairs	261

The University of Cincinnati, College-Conservatory of Music

# Under Construction

Directed by Diane Lala  
Scenic Design by Tammy Honesty

## Light Plot

LIGHTING DESIGNER: Andrew J. Hungerford

ALD: Chad Bonaker

RES. M.E.: ROB HOLLAND

DATE CREATED: Feb 14, 2004

DATE UPDATED: March 31, 2004

SCALE: 1/4" = 1'-0"

FILE NAME: uc\_3\_31.mcd

UNIVERSITY OF CINCINNATI  
COLLEGE-CONSERVATORY OF MUSIC  
THEATRICAL DESIGN & PRODUCTION  
LIGHTING DESIGN DEPARTMENT  
(513) 556-8446

DRAWN BY: KGO, KEH, CSB, AJH

PLATE: **1** OF ONE